

QUICK
SOLUTIONS

Corporate Portfolio

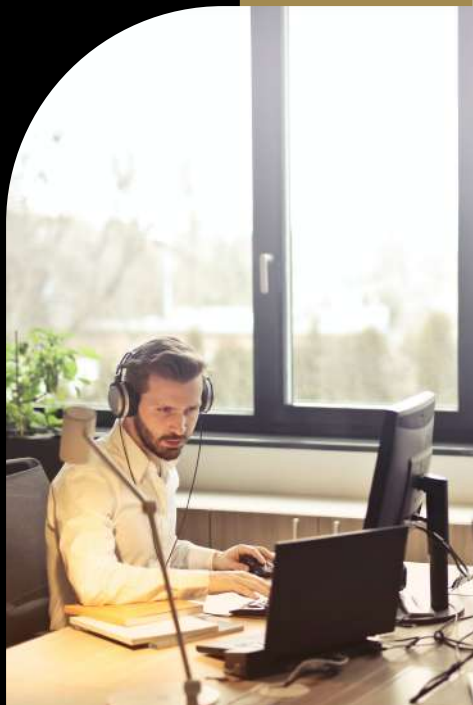
For more information call us
(+92) 316 5090725

Send email at
info@quick-solutions.co

Visit our website
www.quick-solutions.co

Our Philosophy

Our core essence revolves around customer centricity. We deliver what our client's expect, and more. QS never compromises on quality and always aims to provide our client's with a 'best-fit' solutions.



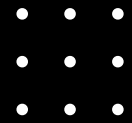
Our Mission

Our mission is to provide our client's with items that enable their business and support their growth. Our quality and service aims to enhance our client's image and what they represent.

Our Services

- 1 General Order Supplies
- 2 Event Management
- 3 Designing & Printing
- 4 Website & Software Development
- 5 Background Check & Logistics

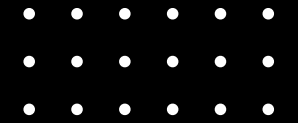
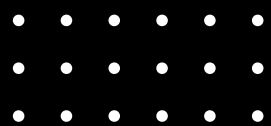




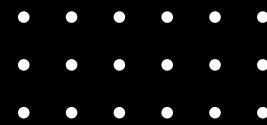
General Order Supplies

We endeavor to provide cost efficient procurement on a larger scale, straight from the source solutions and services in the most demanding environments where lead times and supply locations are challenging.

- Safety Equipment
- Corporate Giveaways & Merchandising
- Hotel Products
- IT Equipment
- Law Enforcement Supplies
- & Much More



// **PREPARE AND
PREVENT, DON'T
REPAIR AND
REPENT** //



Safety^① Equipment

Specifically designed to help protect workers against health or safety risks on the jobsite. By wearing the appropriate safety equipment, workers can decrease the number of preventable accidents that occur on jobsites every year.



Specialized clothing or equipment worn by an employee for protection against infectious materials.



- Helmet
- Electric Gloves
- Shoes
- Belt
- Rope
- First Aid Kit



Corporate Giveaways & Merchandising

We provide a turnkey service from design to delivery for all gifts. We customize gifts to all occasions including:

- Special Ramzan Boxes
- Eid Boxes
- New Year Boxes
- Special Events and etc.



We have a wide range of items to choose from that are suitable for all budget ranges.

3

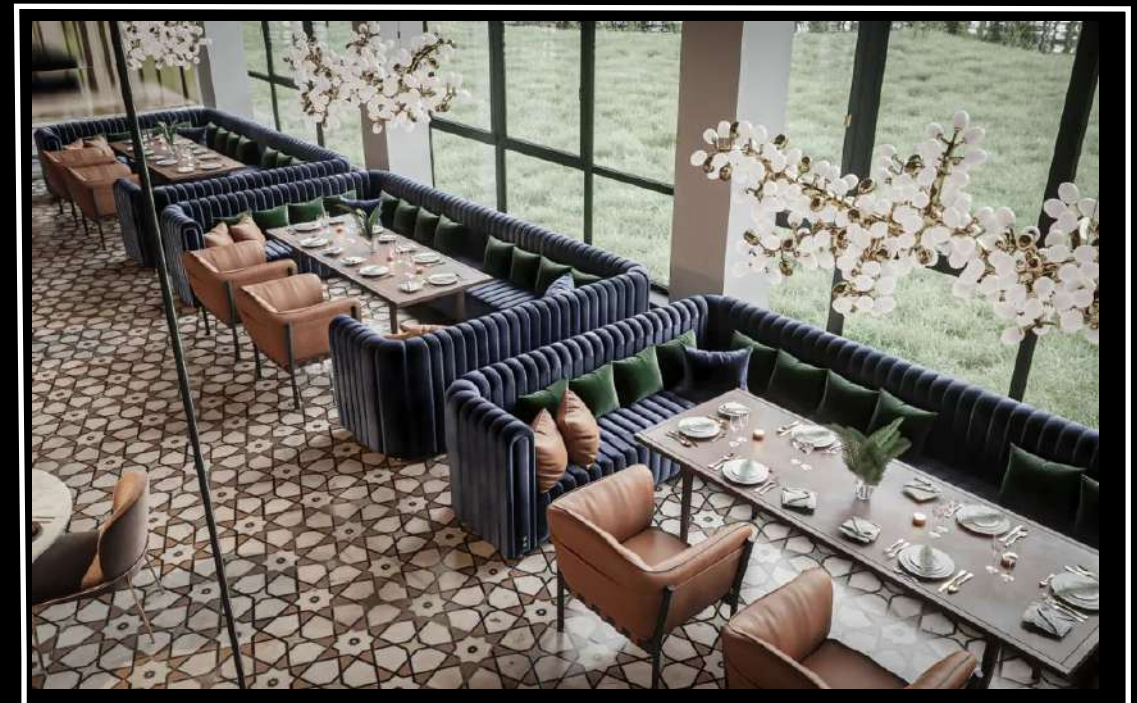
Hotel Products

- Linen
- Chinaware
- Glassware
- Silverware
- Uniforms
- Utensils

And other non-consumable items of similar nature necessary to operate your hotel and restaurant.



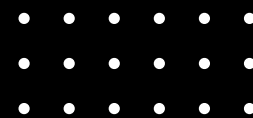
- Cutlery
- Bedding
- Carpeting
- Soaps & Bath Amenities
- Luggage Racks
- Hotel Furniture



IT^④ Equipment

Computers and associated peripheral devices, computer operating systems, utility/support software, and communications hardware and software.

- Hardwares
- Servers
- Photocopier Machines
- Telephones
- Telecommunication Products
- CCTV's System
- Laptops



.....

5

Law Enforcement Supplies

Law enforcement equipment may include:

- Helmet
- Shield
- Baton
- Bullet West
- Belts

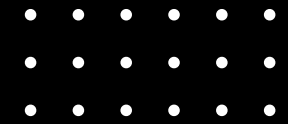
.....



.....

- Anti-riot Gear
- Body Cameras
- Gloves
- Communication Devices





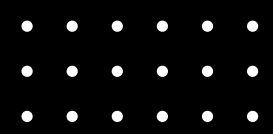
- Office Interior (furniture, wall stickering and etc)
- Ration Boxes
- Agriculture Products Supply
- And More



Much More ⁶

We can supply customized boxes and packages as per your need.

- Fruits
- Vegetables
- Dry Fruits



Event Management

Process of creating and maintaining an event. This process spans from the very beginning of planning all the way to post-event strategizing. At the start, an event manager makes planning decisions, such as the time, location, and theme of their event.



Designing & Printing

Quick Solutions is offering the following services in designing and printing.

- Logo designing
- Social media posts
- Stationary
- Banners
- Flyers
- Brochures
- Company profile





Website & Software Development

Responsible for planning and developing software solutions and website applications, supporting and maintaining a company's websites and digital products.

- Develops any kind of software or application
- Developed software may or may not require to be hosted
- Website application need to get hosted via internet or intranet
- Our specialized developers will creating more complex programs for both computers and mobile devices





Background Check & Logistics

We are also providing logistics & background check services. We send your data to respective regional offices for processing (according to all privacy protocols). Respective offices coordinates with police authorities and point of contacts. Police/Authorities run background check, criminal checks, etc. and report back after signing and stamp.